

UniCote[®]

Building Professionals



unicote.com.au

Project Bondi Icebergs
Product UniCote® Coastal
Finish Off White
Profile Speed Deck Ultra



Contents

Introduction	3
Benefits	5
Solutions	7
Colours and patterns	11
Signature range	13
Matt collection	17
Tasman range	19
Satin collection	21
Metallic collection	21
Essential range	25
Warranties	27
Applications	29
Profiles	32
Specification guide	35
Contact	38

Beyond Colour. Australia's Premium Steel Choice.

Inspired by the versatility and strength of steel, UniCote® has refined a four-tiered product suite that delivers innovative performance based solutions for all locations, striking patterns and colours, personalised service and a genuine choice in colour steel and aluminium.

Project	Mercedes Benz Breakfast Creek
Product	UniCote® Coastal
Finish	Ebony
Profile	Speed Deck Ultra 700



Benefits

Beneath the captivating aesthetic of UniCote® steel lies a set of qualities that ensure enduring performance and long-lasting allure for your next striking project. With rigorous testing, an extensive colour range, innovative coatings and more, we welcome you to delve deeper into understanding what makes UniCote® truly exceptional.

Solutions for all Locations

Four-tiered steel and aluminium solution offering versatility and choice.

Strong Warranties

Warranties up to 50 years.
Pre-approved within 48 hours.

Wide Range of Colours

Over 80 colours and textured patterns to inspire your building design.

Global GreenTag Certification

UniCote® products are Global GreenTagCERT™ Level A certified, representing the highest level of sustainability transparency.

Tested in Australian Conditions

Manufactured to AS/NZS 2728:2013 and rigorously tested to perform in the harshest conditions throughout Australia.

Non-Combustible

Fire rated and compliant to AS1530.1 / AS1530.3. Manufactured for the most extreme BAL-FZ category.

Thermal Efficiency

UniCote® utilises cool pigment technology to reflect more of the sun's heat, helping keep buildings cooler in the warmer weather.

Low Maintenance

Long lifespan and durability with minimal upkeep.



Project | Y-House
Product | UniCote® Coastal
Finish | Monolith
Profile | Stramit Longspan®

Solutions for all locations

UniCote's diverse range of solutions, including Select, Coastal, Extreme, and LUX, caters to a spectrum of architectural and design challenges.

Whether adapting to various applications, providing robust protection against coastal elements, ensuring durability in extreme weather, or adding a touch of luxury, UniCote's offerings ensure high-end performance and aesthetic appeal for all locations.



Scan to compare
UniCote® solutions

Or visit: unicote.com.au/solutions



UniCote® Select

Endurance in colour steel

UniCote® Select effortlessly combines durability with aesthetic allure, showcasing an extensive array of colors and profiles. It harmoniously unites form and function, delivering impeccable quality.

Distance from marine: 1000m+

Available in:
Essential Range | Tasman Range



UniCote® Coastal

For that extra protection

UniCote® Coastal, the ultimate steel solution for the Australian coastline, provides unparalleled corrosion resistance to withstand the harsh conditions of marine environments.

Distance from marine: 0 - 400m+

Available in:
Essential Range | Tasman Range



UniCote® Extreme

For demanding environments

UniCote® Extreme sets a new standard for aluminium materials, designed for use in very severe marine environments right up to the waterline, industrial applications and high-end buildings inland.

Distance from marine: 0m+

Available in:
Essential Range | Tasman Range



UniCote® LUX

Where art meets steel

UniCote® LUX is a premium pre-painted steel solution designed to suit Australian high-end architecture, by combining the beauty of natural finishes with the strength of steel.

Distance from marine: 400m+*

Available in:
Signature Range

*Warranty applications will be considered under 400m dependent on project specifics.

Project | Canterbury House
Product | UniCote® LUX
Finish | Corten Red
Profile | Standing Seam



Over 80 colours and patterns

UniCote® offers a wide range of colours and patterns to choose from, including classic and contemporary colours, elegant matt and satin finishes for modern design aesthetics, and unique textures replicating timber, zinc, and corten to inspire stunning architectural designs.



Signature Range

Maximise your architectural creativity and go beyond simple building materials. Designed to suit Australian high-end architecture, UniCote® LUX offers a unique premium range of modern patterned and textured steel finishes.

Available in:
UniCote® LUX



Matt Collection

A sleek extension of our UniCote® Essential range, the Matt Collection presents three signature colours in a smooth matt finish. Offering refined depth and a contemporary edge, this collection is crafted to enhance architectural form and complement a wide variety of design styles.

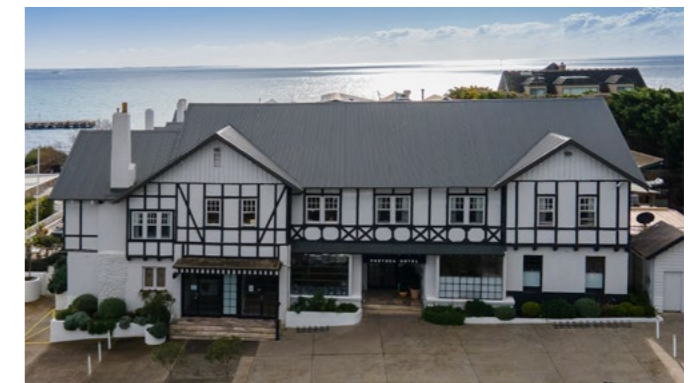
Available in:
UniCote® Coastal



Tasman Range

Inspired by the captivating New Zealand and Pacific landscape, this extension of our UniCote® colour range offers a stunning palette of hues, delivering a touch of natural beauty and harmonious aesthetics to architectural projects.

Available in:
UniCote® Select | Coastal | Extreme



Essential Range

Explore our UniCote® Essential range, offering a diverse palette of 21 captivating colours. Whether you prefer timeless classics, modern shades or coastal Hamptons-inspired colours we have the perfect selection to enhance the beauty of the Australian landscape.

Available in:
UniCote® Select | Coastal | Extreme

Signature range

Redefining building design by combining the beauty of natural finishes with the strength of steel.

Corten

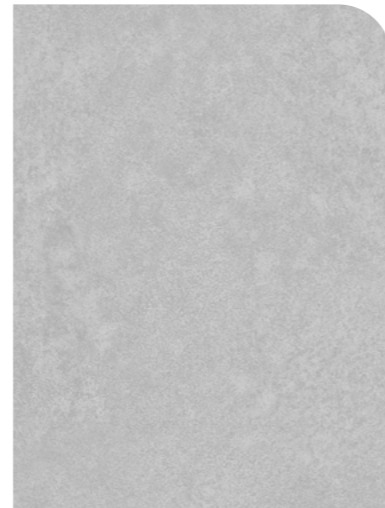


Weathered Iron
SA 0.70 - 0.85 | SRI 15 - 25



Corten Red
SA 0.70 - 0.85 | SRI 15 - 25

Concrete



Metal Stone
SA 0.40 - 0.60 | SRI 35 - 50

Zinc



Zinc Graphite
SA 0.60 - 0.75 | SRI 25 - 35



Silver Quartz
SA 0.40 - 0.60 | SRI 35 - 50

Timber



Ashwood
SA 0.60 - 0.75 | SRI 25 - 35



Maple
SA 0.55 - 0.65 | SRI 30 - 40



Wenge
SA 0.75 - 0.85 | SRI 10 - 20

Imprinting



Pentagon
SA 0.40 - 0.60 | SRI 35 - 50



Saffiano
SA 0.85 - 0.95 | SRI 5 - 15



Spectrum
SA 0.85 - 0.95 | SRI 5 - 15



Project	Mansfield House
Product	UniCote® LUX
Finish	Weathered Iron
Profile	Interlocking Panel

Matt collection

A sleek extension of our UniCote® Essential range in a refined matt finish.

Available in:
UniCote® Coastal



Basal Matt
SA 0.71 | SRI 29
Soft and versatile, UniCote® Basal Matt blends gentle grey hues with a smooth matte finish, creating a calm and refined foundation for elegant, enduring designs.



Monolith Matt
SA 0.79 | SRI 19
Strong and contemporary, UniCote® Monolith Matt pairs deep grey tones with a refined matte finish to bring bold sophistication and lasting depth to architectural spaces.



Midnight Matt
SA 0.95 - 1.0 | SRI 5 - 10
Dramatic and luxurious, UniCote® Midnight Matt offers a rich black hue with a sleek matte surface, perfect for striking contrasts and modern architectural statement pieces.



Project | Bradford House
Product | UniCote® Coastal
Finish | Midnight Matt
Profile | Interlocking

Tasman range

Meticulously curated for architects, our Tasman range offers 39 colours influenced by the Pacific region and the New Zealand landscape.

Available in:
UniCote® Select | Coastal | Extreme

Whites and Creams



Snow White | 85%
SA 0.26 | SRI 91



Pearl White | 55%
SA 0.27 | SRI 90



Cloudy White
SA 0.37 | SRI 76



Fiji Dream
SA 0.31 | SRI 84



Island Sands
SA 0.33 | SRI 81



French Polish
SA 0.44 | SRI 66



Biscuit
SA 0.35 | SRI 79

Greys



Grey Gum
SA 0.45 | SRI 65



Pilbara Grey
SA 0.60 | SRI 45



Wolfram
SA 0.64 | SRI 39



Stormy Grey
SA 0.70 | SRI 32



Tudor
SA 0.74 | SRI 26



Albatross
SA 0.71 | SRI 30



Hematite
SA 0.75 | SRI 25



Matai
SA 0.77 | SRI 23



Kauri
SA 0.80 | SRI 19



Cosmic
SA 0.94 | SRI 0

Blues and Greens



Sky Blue
SA 0.64 | SRI 39



Faded Denim
SA 0.75 | SRI 25



Thunder Blue
SA 0.71 | SRI 30



Blue Metal | Satin
SA 0.78 | SRI 19



Banksia
SA 0.58 | SRI 46



Moss Green
SA 0.60 | SRI 45



Billabong
SA 0.76 | SRI 24



Royal Fern
SA 0.71 | SRI 30



Jungle Green
SA 0.74 | SRI 26



Cyad
SA 0.75 | SRI 25

Reds and Browns



Desert Dune
SA 0.44 | SRI 66



Rose
SA 0.56 | SRI 50



Sunset Red
SA 0.63 | SRI 41



Bauxite
SA 0.70 | SRI 32



Cobble
SA 0.53 | SRI 54



Elkhorn
SA 0.59 | SRI 46



Clay
SA 0.67 | SRI 36



Dusty Coal
SA 0.72 | SRI 29



Aged Copper
SA 0.70 | SRI 32



Obsidian
SA 0.73 | SRI 28

Satin collection

An elegant extension of the Tasman range, the Satin Collection delivers a smooth, soft-touch satin surface with a low 10% gloss.



Pilbara Grey | Satin
SA 0.60 | SRI 43



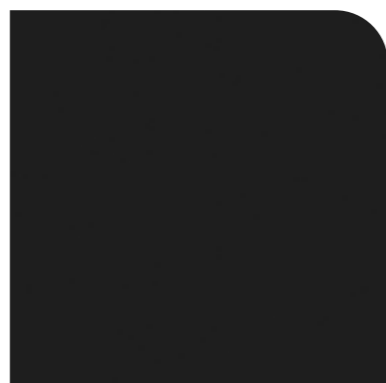
Tudor | Satin
SA 0.76 | SRI 22



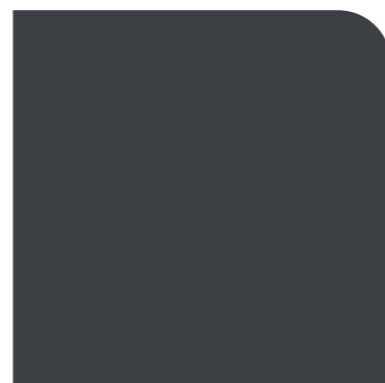
Obsidian | Satin
SA 0.76 | SRI 22



Cyad | Satin
SA 0.78 | SRI 18



Cosmic | Satin
SA 0.95 | SRI -1



Blue Metal | Satin
SA 0.78 | SRI 19

Metallic collection

A striking extension of our Tasman range in two exclusive metallic finishes.



Metallic Quartz
SA 0.52 | SRI 55



Metallic Metal
SA 0.66 | SRI 37



Project	Winchester Park Estate
Product	UniCote® Select
Finish	Aged Copper
Profile	Nailstrip

Project | Ebbinge House
Product | UniCote® Select
Finish | Hematite
Profile | Standing Seam



Essential range



Hamptons White
SA 0.27 | SRI 90



Off White
SA 0.38 | SRI 81



Dusk
SA 0.57 | SRI 49



Smooth Cream
SA 0.37 | SRI 76



Merino
SA 0.45 | SRI 65



Birch
SA 0.47 | SRI 62



Montauk
SA 0.40 | SRI 71



Gull Grey
SA 0.43 | SRI 68



Stony Brook
SA 0.57 | SRI 48



Armour Grey
SA 0.58 | SRI 46



Jasmin Brown
SA 0.68 | SRI 34



Wallaroo
SA 0.64 | SRI 39



Basal
SA 0.69 | SRI 33



Slate Grey
SA 0.71 | SRI 30



Monolith
SA 0.73 | SRI 28



Ebony
SA 0.96 | SRI 0



Iron Grey
SA 0.74 | SRI 26



Mountain Blue
SA 0.75 | SRI 25



Caulfield Green
SA 0.75 | SRI 25



Mist Green
SA 0.60 | SRI 45



Heritage Red
SA 0.74 | SRI 26

Essential colour range available in:
UniCote® Select
UniCote® Coastal
UniCote® Extreme

Matt collection



Basal Matt
SA 0.71 | SRI 29



Monolith Matt
SA 0.79 | SRI 19



Midnight Matt
SA 0.95 - 1.0 | SRI 5 - 10



Project	Portsea Hotel
Product	UniCote® Coastal
Finish	Slate Grey
Profile	Corrugated

Warranties up to 50 years

UniCote® products are thoughtfully designed and rigorously tested to provide optimum protection.

Whether you can feel the salt laden air on your face along the coast, or enjoy the tranquility of your own suburban backyard inland, our range of steel and aluminium solutions provide strong warranties specific to your location.

Project specific warranties available upon application via unicote.com.au/warranty



Scan to apply for a UniCote® warranty pre-approval

Or visit: unicote.com.au/warranty



Applications

The remarkable versatility of UniCote® allows it to be effortlessly formed into numerous profiles, ideal for roofing, cladding, garage doors, insulated panels and more. This flexibility unleashes a realm of design possibilities.

Project	Fish Creek
Product	UniCote® LUX
Finish	Corten Red
Profile	Nailstrip and Interlocking Panel



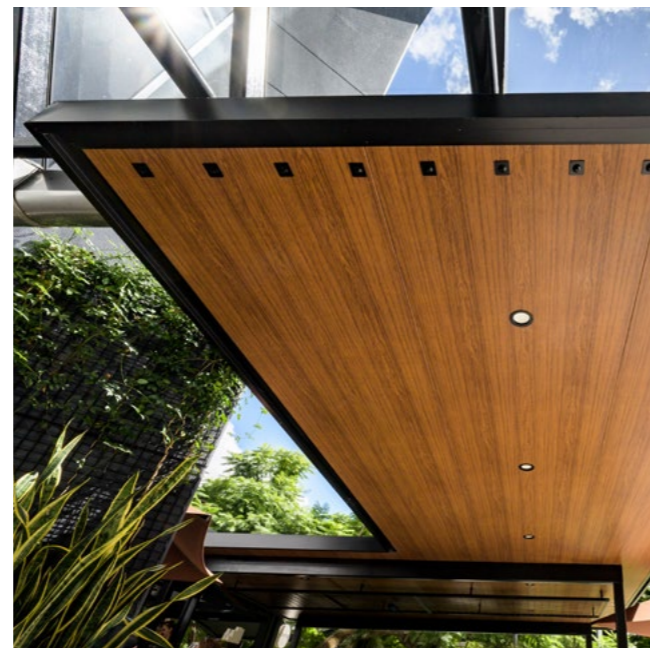
Roofing



Cladding



Garage Doors



Insulated Panel



Project | Anvil Brewing Company
Product | UniCote® LUX
Finish | Maple
Profile | Interlocking Panel

Choose your profile

UniCote® is available in a versatile range of profiles to suit diverse architectural needs. From sleek and contemporary designs to timeless classics, the choice of profiles cater to a spectrum of styles and applications. Whether you're envisioning a modern facade or a traditional roofing solution, UniCote® has you covered. Choose from an array of profiles to bring your design vision to life with confidence and sophistication.

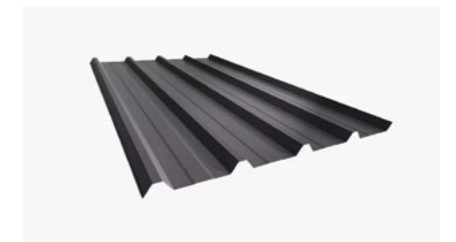
Contact us to enquire about other profiles available.



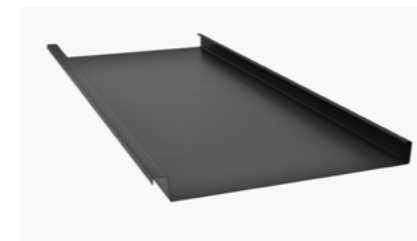
Corrugated



Concealed Deck



Five Rib



Standing Seam



Interlocking



Flatlock / Shingles

More profiles available.

Project | Brimbank Aquatic and Wellness Centre
Product | UniCote® LUX
Finish | Weathered Iron
Profile | Insulated Panel



UniCote® specification guide

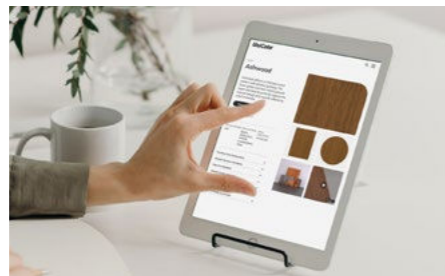
The UniCote® specification guide is a reference tool that provides general examples of how UniCote® steel may be specified for roofing and cladding applications. It is intended to support architects across different stages of design by illustrating possible specification approaches, without prescribing a specific method or technical requirement.



Scan to view the UniCote® specification guide

Or visit: unicote.com.au/specification-guide

Select your solution, finish and profile



Solution

Example: UniCote® LUX

UniCote® offers a wide range of steel and aluminium solutions to make the right choice in building materials suitable for the atmospheric environment present.

Choose from:

- UniCote® Select
- UniCote® Coastal
- UniCote® Extreme
- UniCote® LUX

Finish

Example: Ashwood

Select from an array of UniCote® colours and patterns from our:

- Essential range
 - Matt collection
- Tasman range
 - Satin collection
- Signature range

Profile

Example: Interlocking Panel

UniCote® integrates with a variety of architectural cladding and roofing profiles including:

- Standing Seam
- Interlocking Panel
- Snaplock
- Nailstrip
- Shingles
- Cassette
- Corrugated
- Five Rib
- Concealed Deck



Project	Latrobe Valley GovHub
Product	UniCote® LUX
Finish	Ashwood
Profile	Interlocking Panel

Project Lambeth House
Product UniCote® LUX
Finish Zinc Graphite
Profile Standing Seam

Get in touch

For more information, advice or samples,
get in touch with our UniCote® team.

unicote.com.au
1800 UNICOTE (1800 864 268)

Head office

Victoria

64-66 Ventura Place
Dandenong South
VIC 3175

State offices

New South Wales

15 Wonderland Drive
Eastern Creek
NSW 2766

Queensland

Unit 5, 145 Archerfield Road
Richlands
QLD 4077

Western Australia

10 Glassford Road
Kewdale
WA 6105

South Australia

26 Circuit Drive
Hendon
SA 5014

Follow us @unicotesteel



Solar Absorptance (SA) is the fraction of the total incident solar radiation that is absorbed by the roofing material. It is expressed as a ratio between 0 and 1, with a lower number a cooler option. These are nominal values calculated in accordance with ASTM E 903-96.

Solar Reflectance Index (SRI) is a measure of the solar reflectance and emissivity of materials. Measured on a scale of 0 (least reflective) to 100 (most reflective). These are nominal values calculated in accordance with ASTM E1980-11.

The colours, patterns and design shown are provided as a guide only. We strongly recommend comparing your choice with an actual steel sample as colour and textural variations may apply. Please check availability of your chosen colour with your supplier. UniCote® is a registered trade mark of Selection Steel Trading Pty Ltd. © 2023 Selection Steel Trading Pty Ltd. ABN 37 005 324 407. All rights reserved.

**Beyond Colour.
Australia's Premium Steel Choice.**

Visit unicote.com.au

UniCote[®]

V1.0 2026

